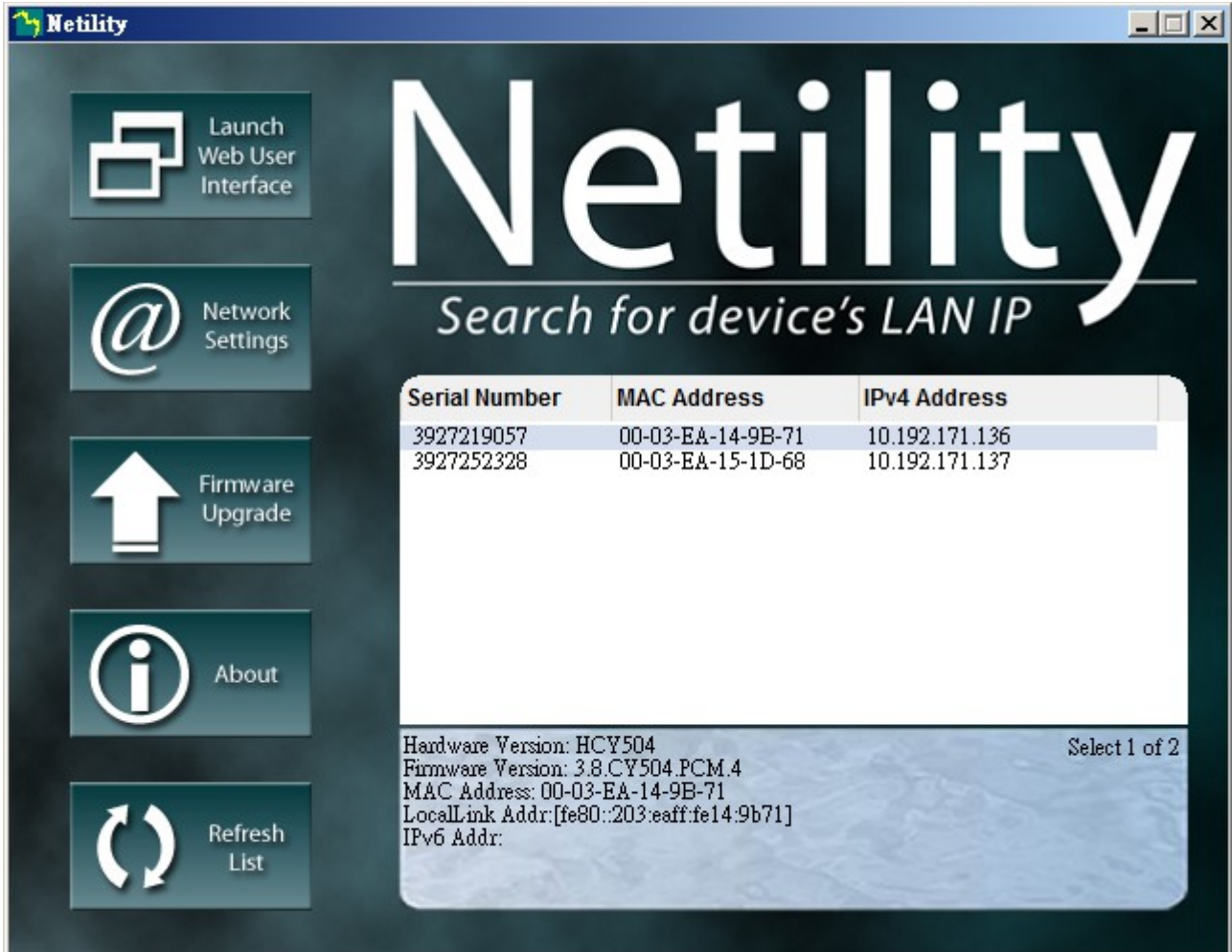


SNMPCard Account reset

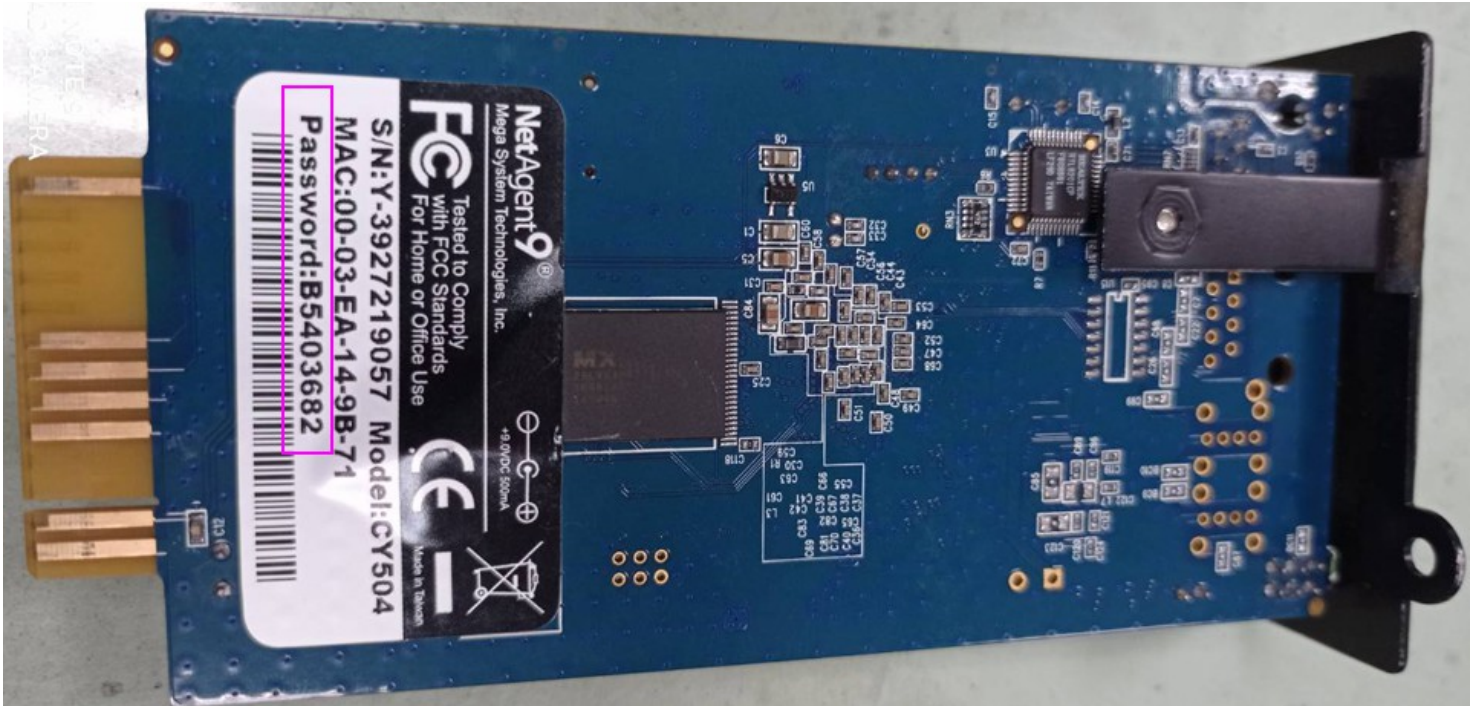
Step 1 : Get **SNMPCard IP** >> Start the Netility to get the snmpcard IP

(Example : 10.192.171.136)



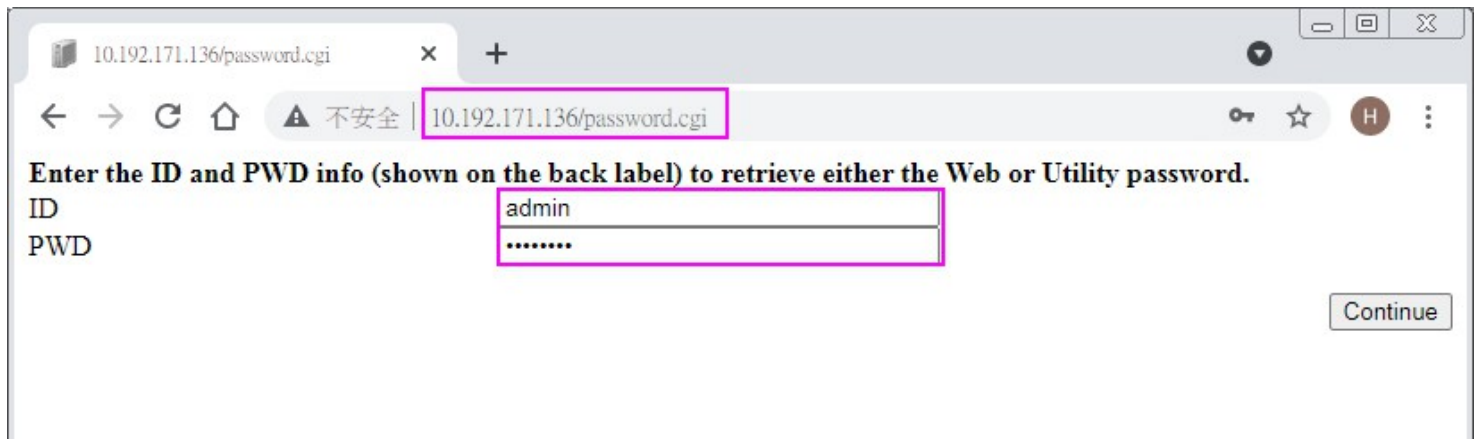
Step 2 : Get **SNMPCard Password** >> SNMPCard Password label

(Example : B5403682)



Step 3 >> Start the browser and type <http://snmpcard.IP/password.cgi>

(snmpcar.IP from step 1)



Step 4 >> Fill in the ID and snmpcard password

- ID : **admin**
- PWD : password (from step 2)

Step 5 >> Press **continue** button and **clear** it